

# BARNES

INTERNATIONAL REALTY | CÔTE BASQUE

”

Magnificent Duplex in Ondarreta-San Sebastian

---



SELLING PRICE : €1,690,000

---

EMAIL : [DONOSTIA@BARNES-INTERNATIONAL.COM](mailto:DONOSTIA@BARNES-INTERNATIONAL.COM)

2, place Bellevue  
64200 Biarritz



PHONE : 0034 843 75 11 15  
[donostia@barnes-international.com](mailto:donostia@barnes-international.com)

23, Boulevard Victor Hugo  
64500 Saint-Jean-de-Luz

278, Avenue du Touring Club  
40150 Hossegor

Camino Kalea, 1  
20004 San Sebastián

# BARNES

INTERNATIONAL REALTY | CÔTE BASQUE

## DESCRIPTION

Very comfortable spacious contemporary duplex surrounded by 2 terraces.

Unobstructed views of the city, 2 dwellings on the ground floor and 2 on the first floor.

An entrance hall leads us to a very bright living room with stained glass windows that provide the room with excellent natural light.

The kitchen and living room are separated and access to the first floor is via a pretty spiral staircase.

The duplex is located on the third floor which provides the best views and privacy of the whole residence. A garage with two parking spaces on the ground floor and a cellar integrated into the apartment at the level of the terraces.

In the ondarreta district, the apartment is in a private residence at the foot of Mount Igueldo. The green spaces around the swimming pool remind us of the exuberance of the city of San Sebastian.

A beautiful property with all the necessary attributes to live comfortably.

# FEATURES

Type de bien:	Apartment	Surface:	200.0 m <sup>2</sup>	Terrain:	-
Charges:	€250.00	Périodicité des charges:	-	Ascenseur:	Yes
Piscine:	-	Nombre de lots:	-	Taxe foncière:	-
Parking:	-	Compléments de loyer:	-	NB de pièces:	4 rooms
NB de chambres:	4 bedrooms	Honoraire à la charge:	from the seller		

Les informations sur les risques auxquels ce bien est exposé sont disponibles sur le site Géorisques : [www.georisques.gouv.fr](http://www.georisques.gouv.fr)

## ENERGY PERFORMANCE DIAGNOSTIC

Diagnostic de performance énergétique (DPE) : ? Not specified

Indice d'émission de gaz à effet de serre (GES) : ? kg CO<sub>2</sub>/m<sup>2</sup>.an

2, place Bellevue  
64200 Biarritz



PHONE : 0034 843 75 11 15  
[donostia@barnes-international.com](mailto:donostia@barnes-international.com)

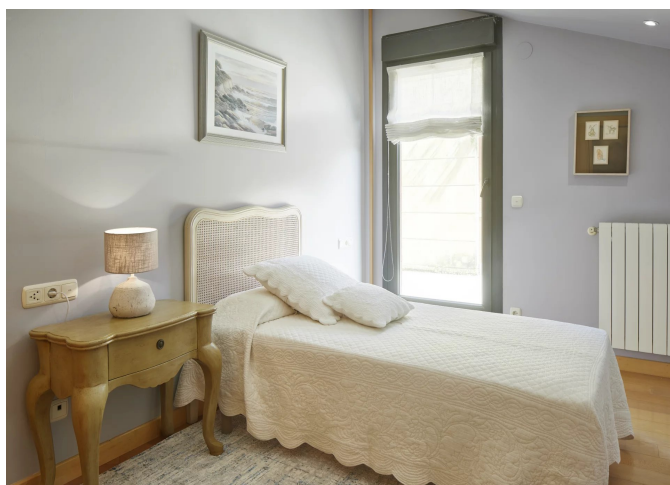
23, Boulevard Victor Hugo  
64500 Saint-Jean-de-Luz

278, Avenue du Touring Club  
40150 Hossegor

Camino Kalea, 1  
20004 San Sebastián

# BARNES

INTERNATIONAL REALTY | CÔTE BASQUE



2, place Bellevue  
64200 Biarritz



PHONE : 0034 843 75 11 15  
donostia@barnes-international.com

23, Boulevard Victor Hugo  
64500 Saint-Jean-de-Luz

278, Avenue du Touring Club  
40150 Hossegor

Camino Kalea, 1  
20004 San Sebastián